

COMPACT HMS 200 MINI LOADER



HMS 200 Compact Mini Loader is a global award winning innovation utilising world class technology. The remote controlled mini loader provides the operator with increased capability, safety and productivity.

The ultra-low profile allows the mini loader to be used in hard to access areas such as under conveyor belts without the need for expensive shutdowns whilst maintaining productivity and safety.

Hetronic Remote Control

Encased in a tough, IP65, fiber enforced polycarbonate case, the lightweight, ergonomic radio remote control by HMS Equipment, is rugged and reliable; engineered for the toughest industrial environments.

Offering increased safety, productivity and operational efficiency, the new mini loader with remote control uses patented User Interface (UI) technology for optimal control and reliability. New, fully proportional, electro-hydraulic valves deliver precise and repeatable movement under all working conditions.

KEY FEATURES

Low Profile

- With a height of only 24½ inches, the mini loader is capable of working in most hard to access areas.

Proximity Detection System

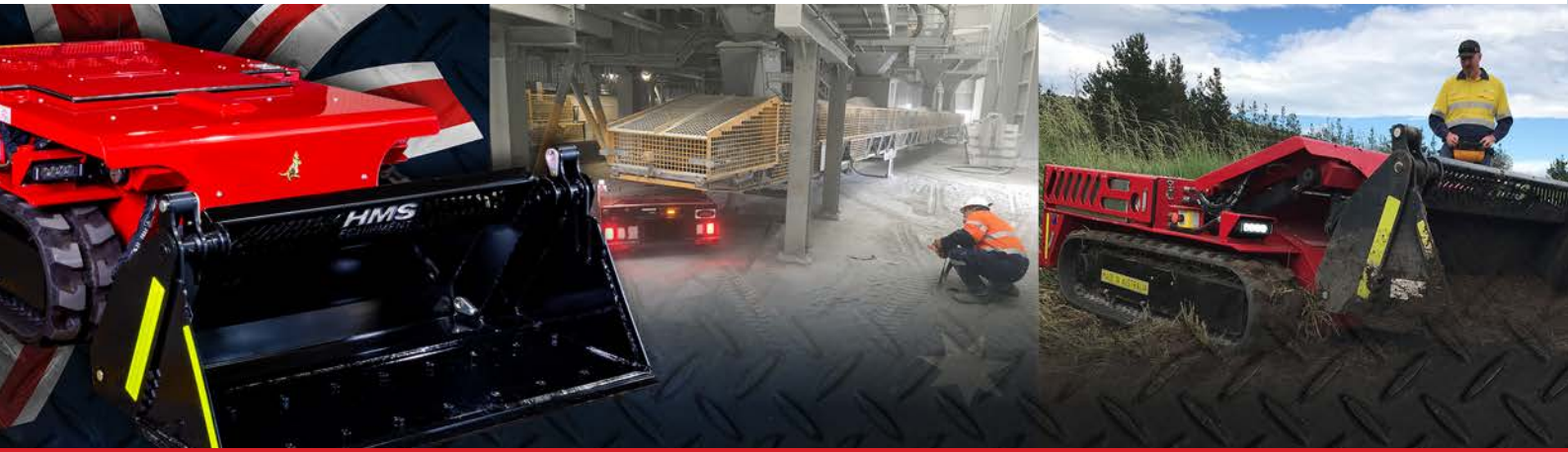
- Alerts the operator when they are too close to the machine to prevent accidents.
- Shuts down the machine when operator is too close to the machine.

Hetronic Remote Control

- Self-test routine.
- Emergency stop switch.
- Joysticks spring return to neutral.



*Actual products may vary in design and in use. We reserve the right to improve our products and change our specifications without notice. The gross horsepower of the engine has been laboratory rated by the manufacturer. Actual engine horsepower may be lower due to operating requirements.



HMS 200 MINI LOADER

ENGINE	20HP Kubota D902, 3 cylinder, liquid cooled, diesel
FUEL TANK CAPACITY	4½ Gallons
HYDRAULIC TANK CAPACITY	25 Gallons
SYSTEM PRESSURE	6100 Psi
DIMENSION	Length: 104 inches (w/bucket) Height: 24½ inches Width: 52 inches
GROUND CLEARANCE	3 inches
SPEED	Low speed: 1.5mph High speed: 3mph
WEIGHT	1.72 tonne
BUCKET CAPACITY	Vol: 0.155m³ Mass: 0.375 tonne

HETRONIC RADIO REMOTE CONTROL

FREQUENCY RANGE	434MHz
RF POWER	10 mW standard
MODULATION	FM – Narrow band
BANDWIDTH	25kHz
TYPICAL RANGE	100m standard, 200m with optional antenna
TEMPERATURE RANGE	-13°F – 158°F
HUMIDITY RANGE	0 – 97%
RESPONSE TIME	Approx. 55ms
TRANSMITTER	IP65, built-in antenna, 12hrs continuous operation, spring return joystick
RECEIVER	IP65
BATTERY & CHARGER	Charger Power: 9 – 30 VDC, 110/220 VAC Charging Time: <4hrs Battery Life: Approx. 900 charges Battery Type: NiMh Battery Capacity: 1200mAH
CERTIFICATES	RCM, CE, TUV, SUVA, ISO 9001 & compliance with AS/NZS 4240.1:2009